



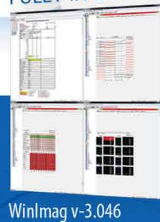
Environmental data acquisition, management and processing systems for CEMS and AQMS

More than 5 000 our applications for the data management, processing and visualisation are being used worldwide with great success.

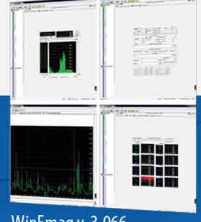
- Unlimited number of connected systems
- Self-diagnostic, archiving and logging functions integrated
- Modular concept, universality and high flexibility
- Extended support and interconnectivity with third party products
- High data availability, centralization and protection
- Fully configurable and compatible
- Easy data visualization, presentation and reporting
- Compliance with regulation in force and authority requirements
- Reliable and well approved professional solution
- 25 years development and experiences behind



FULLY IN COMPLIANCE WITH EN REGULATIONS



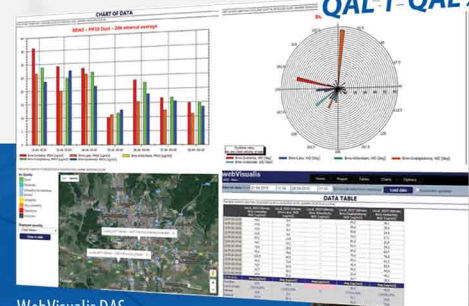
WinMag v-3.046



WinEmag v-3.066



Visualis



WebVisualis DAS

QAL-1=QAL-2 QAL-3

WINIMAG IS COMPUTER BASED FLEXIBLE AND UNIVERSAL DATA ACQUISITION SYSTEM, WHICH PROVIDES RELIABLE DATA COLLECTION, STORAGE, PROCESSING AND ASSESSMENT, MANAGEMENT, TRANSMISSION AND CONTROL TOOLS IN AMBIENT AIR QUALITY MONITORING APPLICATIONS. IT SUPPORTS SERVER-CLIENT TOPOLOGY IN BIGGER AQM NETWORKS, WHERE BI-DIRECTIONAL COMMUNICATION WITH CENTRAL MANAGEMENT SYSTEM IS PROVIDED, INCLUDING IMPLEMENTED REMOTE CONTROL MECHANISMS.

WINCENTRAL IS CENTRAL DATA MANAGEMENT SYSTEM, WHICH OFFERS PLENTY OF SOPHISTICATED FUNCTIONS AS SECURE AND VERIFIED COMMUNICATION WITH ANY DATA ACQUISITION SYSTEM, WHERE MULTIPLE COMMUNICATION PROTOCOLS AND INTERFACES ARE SUPPORTED, AND ALSO DATA CAPTURE, PROCESSING, ANALYSIS, VALIDATION AND CONTROL TOOLS, ALL COMBINED TO HIGH PERFORMANCE CENTRALIZED DATA MANAGEMENT SYSTEM WITH ALMOST UNLIMITED SOURCE POINTS.

VISUALIS IS HIGH PROFESSIONAL TOOL FOR DATA EVALUATION, VISUALISATION, REPORTING AND PRESENTATION. THIS TOOL CAN WORK WITH DATA FROM SEVERAL DATABASES FROM BOTH TYPES OF MONITORING - AIR QUALITY MONITORING AND EMISSION MONITORING. AND ALSO WITH OTHER DATA, WHICH CAN BE STORED IN SQL OR ISO DATABASES

WINEMAG IS COMPLETE EMISSION CONTROL SYSTEM, WHICH PROVIDES HIGH QUALITY AND COMPREHENSIVE TOOLS TO CONTINUOUS EMISSION MONITORING SYSTEMS. SYSTEM MODULARITY, ITS HIGH FLEXIBILITY, AND UNIVERSALITY ALLOWS CONNECTION OF SEVERAL EMISSION SOURCES TO ONE DATA ACQUISITION SYSTEM ONLY. IN ADDITION, IT DOES NOT REQUIRE ANY INTERMEDIARIES INDUSTRIAL DATA LOGGERS, BECAUSE IT IS CAPABLE TO MONITOR IN REAL TIME ALL THE REQUIRED VALUES DIRECTLY FROM THE ANALYZERS AND DIGITAL OR ANALOGUE INPUTS.

WINMODIMEXPERT IS DESIGNED TO DISPLAY, INTERPRET AND PREDICT DATA FROM REAL-TIME MONITORING SYSTEMS. ITS MAIN ROLE IS TO ASSIST IN SOLVING CRISIS SITUATIONS IN CASE OF LEAKAGE OF HAZARDOUS SUBSTANCES AND TO PROVIDE AN OPERATOR WITH SUFFICIENT INFORMATION FOR DECISION-MAKING IN ORDER TO PROTECT HEALTH AND PROPERTY OF CITIZENS. THE CORE OF THE SYSTEM IS A COMBINATION OF SEVERAL MATHEMATICAL MODELS AUTOMATICALLY CHOSEN ACCORDING TO PREDEFINED CRITERIA. THE DISPERSION MODELING BASED ON REGULATORY REQUIREMENTS, WHERE CALCULATION OF CONCENTRATIONS OF ANY POLLUTANTS FOR DETERMINED AREA WITH CONSIDERATION OF METEOROLOGICAL CONDITIONS AND MODELS, IS ANOTHER APPLICATION AREA OF THIS SYSTEM. THE RESULTS OF THE CALCULATIONS ARE DISPLAYED TO A DIGITAL MAP SUPPORTED BY VECTOR GRAPHICS TOOLS.



ISOTHERMAL SHELTER LU3300



DATALOGGER E-LOG



Rack version



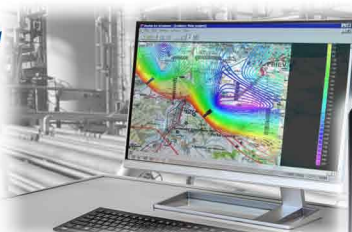
DATA READING
AVERAGING
ANALYSIS
VISUALISATION



STORAGE
MODELING
REPORTING
VALIDATION



PRESENTATION
TRANSFER
EVALUATION
PROTOCOLS



Desktop version



Remote control

www.envitech.sk

ENVitech s.r.o.
Janka Kráľa 16
911 01 Trenčín, Slovak republic

envitech@envitech.sk
T: +421 32 656 35 11
F: +421 32 656 35 26

